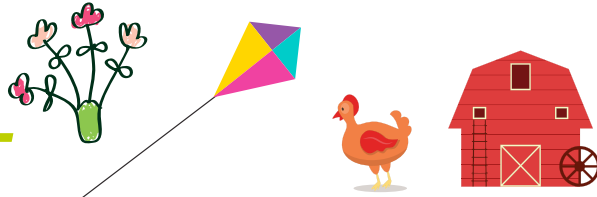


Discovering Me

MONTHLY TIDBITS

APRIL

2024



Dear Parents,

Spring is finally here and hopefully the nice weather associated with the season will arrive and stay with us for a while.

The topics that will be covered this month in Ms. Christine & Ms. Rose's class include continuing with our **study of the letters** of the alphabet, **spring fun, space and planting** as well as **sight words** with our Pre-K classes. Ms. Niki's topics include the **farm, dinosaurs, insects,** and **planting. Science Fridays** will be done in all classes. Please check your child's calendar for specific daily activities.

Keep in mind that should you have any questions or concerns regarding your child's day, please feel free to reach out to your child's teacher via e-mail or phone. Also note that should an issue arise during the day such as a different pick-up person or an early/late pick-up please call your child's classroom instead of e-mailing us, because we may not see your e-mail until the end of the day.

Don't forget that **Thursday, April 11th school pictures will be taken.** The photographer will be taking individual and class pictures.

Our **Annual Family Fun Day** is scheduled for **Tuesday, June 11th.** It will take place from 10:00am until 2:00pm at D'Onofrio Park in New Rochelle. There will be no school on Family Fun Day. Also note that our spring fundraiser will be a 50/50 raffle which will be held that day. We are really looking forward to Family Fun Day – it is an annual favorite for all.



A Few Reminders:

- Please take a moment to **complete the on-line survey.** Your feedback is particularly important to us. Also, note that you can call us at any time with questions, ideas, or suggestions. Please note that all newsletters are e-mailed to you and posted on our website.
- Please update your child's change of clothes in their shoebox from winter clothing to warm weather clothing.
- If your child is participating in **Pizza Fridays** and you have not paid the fee as of yet, please do so right away.
- We still have **sweatshirts available for sale** so if you are interested let your child's teachers know. It's good material for the weather this time of year.
- Please **do not forget to include utensils and drinks** with your child's lunch. If your child's lunch needs to be heated, please make sure it is in a container that can be put in a microwave or toaster oven. Some of the lunches in Bento boxes and similar type lunch boxes are not able to be easily heated so keep that in mind.
- Now that the weather is getting warmer, please **dress your child appropriately for outdoor play**—play clothes & sneakers are best –NO party shoes, sandals or party dresses as safety comes before fashion. Also keep in mind that the mornings are still cool so send your child to school with a jacket or sweatshirt.

As always, if you have any questions or suggestions, please feel free to call us any time.

Sincerely, Ms. Carol, Ms. Laurie, and Staff



at-a-glance

April Topics:

- Letters of the alphabet
- The Farm
- Planting & Farms
- Dinosaurs & Zoo
- Insects
- Science Fridays



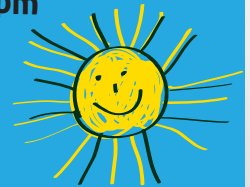
Don't Forget...
Picture Day is
Thursday, April 11th

Photos will be
ordered online after
they are taken.

What's your child
bringing for
Show-n-Tell?
Check the
calender!



Save the date for
Family Fun Day!
Tuesday, June 11th
10am–2pm











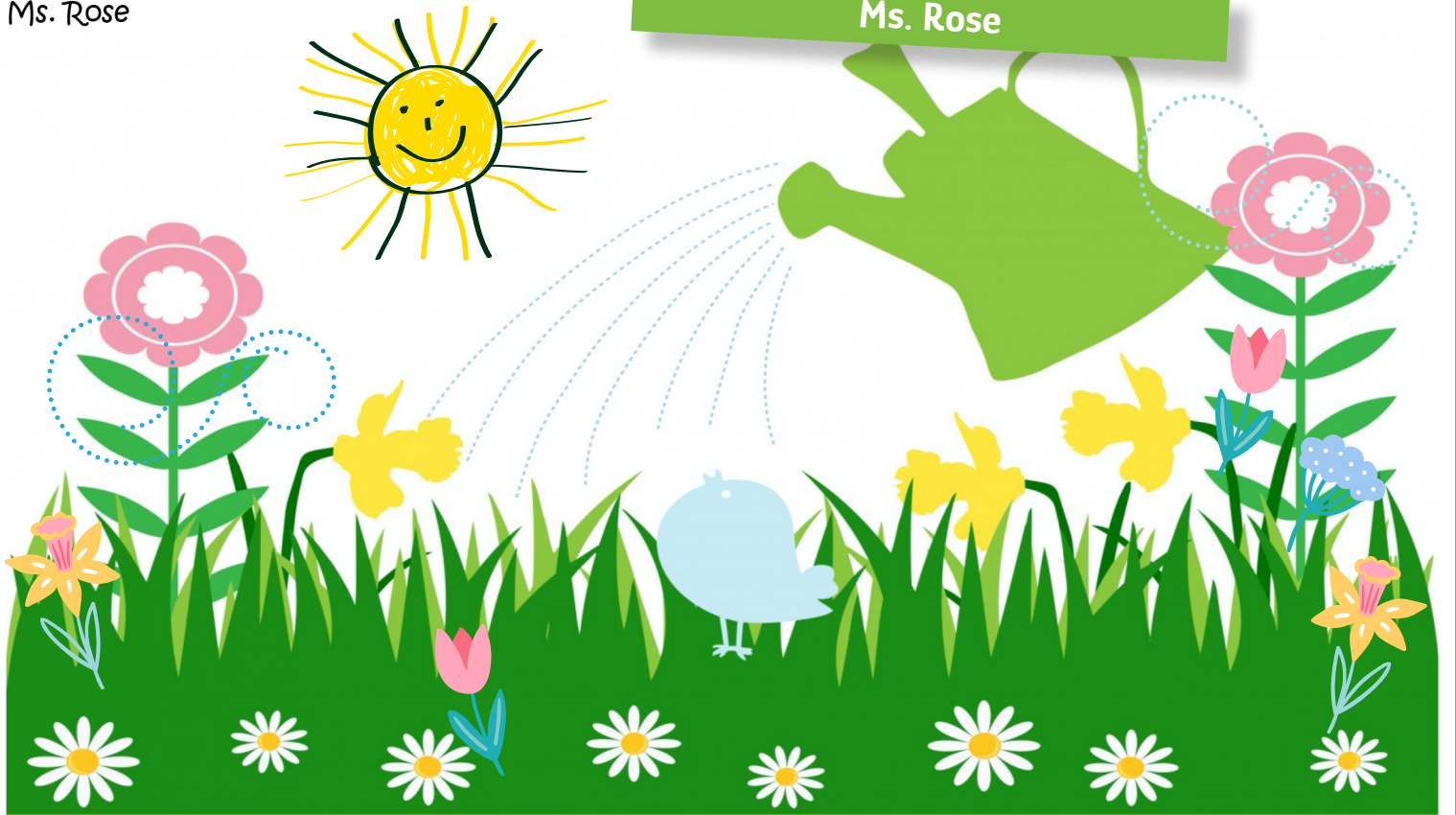
It's time to update
your child's shoebox
with warm weather
clothing!




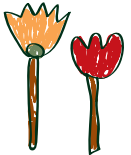






APRIL

Sunday	Monday	Tuesday	Wednesday	Thursday	Friday	Saturday
	1 Easter Monday April Fools' day School Closed	2 Pig National Peanut Butter & Jelly Day	3 Cow 	4 Horse	5 Sheep	6 
7 DINOSAURS	8 Dino Names 	9 T-Rex Eid-al-Fitr	10 Stegosaurus National Sibling Day	11 Picture Day Wear Your Best Smile National Pet Day	12 Play-Doh Fossil	13 
14 INSECTS	15 Fire Drill 9:30 Bumble Bee Tax Day	16 Lady Bug Nat'l Librarian Day	17 Ant Banana Day	18 Caterpillar Animal Cracker Day Nat'l High Five Day	19 Butterfly 	20 
21 PLANTING	22 Earth Day Passover Starts Jelly Bean Day	23 Picnic Day	24 Planting Seeds Pigs in a Blanket Day	25 Flower Take Your Child to Work Day	26 Arbor Day Pretzel Day	27
28 SPRING SENSORY	29 Goop	30 Sensory Bags Passover Ends				





APRIL

Sunday	Monday	Tuesday	Wednesday	Thursday	Friday	Saturday
	1	Nn 2	Nn 3	Hh 4	Hh 5	6
SPRING FUN	Easter Monday April Fools' day School Closed	Nest National Peanut Butter & Jelly Day	Ninja	Hyacinth Flowers	Happy Spring	
7	Uu 8	Uu 9	Ww 10	11	Ww 12	13
MORE SPRING FUN	Up, Up and Away	Umbrella Eid-al-Fitr	Windmill National Sibling Day	Picture Day Wear Your Best Smile National Pet Day	Weather Bear, What Will You Wear?	
14	Fire Drill 9:30 15	16	17	18	19	20
SPACE	Earth Tax Day	Solar System Planets Nat'l Librarian Day	Rocket Ship Banana Day	Show-n-Tell Animal Cracker Day Nat'l High Five Day	Astronaut	
21	22	Jj 23	Jj 24	25	26	27
PLANTING	Earth Day Passover Starts Jelly Bean Day	Jelly Picnic Day	Roots in a Jar Pigs in a Blanket Day	Planting Seeds, Sun, Dirt & Patience Take Your Child to Work Day	Arbor Day Pretzel Day	
28	29	30				
INSECTS	Lady Bug	Bumble Bee Passover Ends				



APRIL

Sunday	Monday	Tuesday	Wednesday	Thursday	Friday	Saturday
	1	2	3	4	5	6
SPRING FUN	Easter Monday April Fools' day School Closed	<u>N</u> est National Peanut Butter & Jelly Day	<u>N</u> inja	<u>H</u> yalcinth Flowers	<u>H</u> appy Spring Child of the Week CHARLIE	
7	8	9	10	11	12	13
MORE SPRING FUN	<u>U</u> p, <u>U</u> p and <u>A</u> way	<u>U</u> mbrella Eid-al-Fitr	<u>W</u> indmill National Sibling Day	P icture Day Wear Your Best Smile National Pet Day	<u>W</u> eather Bear, What Will You Wear? Child of the Week ELIAS	
14	15	16	17	18	19	20
SPACE	Fire Drill 9:30 Earth Tax Day	Solar System Planets Nat'l Librarian Day	 Rocket Ship Banana Day	Show <u>n</u> -Tell Animal Cracker Day Nat'l High Five Day	Astronaut Child of the Week JESSE G.	
21	22	23	24	25	26	27
PLANTING	Earth Day Passover Starts Jelly Bean Day	<u>J</u> elly Picnic Day	<u>R</u> oots in a <u>J</u> ar Pigs in a Blanket Day	P lanting Seeds, Sun, Dirt & Patience Take Your Child to Work Day	 Arbor Day Pretzel Day Child of the Week LUCA	
28	29	30				
INSECTS	Lady Bug	Bumble Bee Passover Ends	