

Discovering Me MONTHLY TIDBITS

hello

February

2024



Dear Parents,

February is a month of feelings and love. At school we will focus on teaching the children to love, respect, and care for one another.

This month we will continue our emphasis on the letters of the alphabet—sight and sound recognition for 3's and pre-k classes. All class lessons will incorporate **Black History Month Stories**, **Ground Hog Day**, **Lincoln's & Washington's Birthday**, **President's Day**, and valentine's crafts. February is also **National Children's Dental Health Month** so we will have discussions and stories about the importance of dental health.



We will be celebrating **Valentine's Day on Wednesday, February 14th** so try to have your child wear red, pink, or purple to school on this day. Most children bring in Valentine cards for their friends. If you send in cards from your child, just fill out your child's name but please do not address them to anyone specific as it is too difficult to separate all the cards by name.

We apologize for the delay in sending out report cards. We had multiple staff members sick at the same time, so we fell a little behind. Please remember to return your child's report card after reviewing it. We need them for June's progress report. At that time, you will be able to keep them.

If you plan on your child returning in September, please make sure to get your registration papers in at this time because space is very limited. Also do the same if your child is attending Summer Camp. Also note, if you have registered for summer 2024 and/or September 2024 and have not paid the registration fee, or spoken with us about payment please do so now because we will not be able to hold your child's spot any longer.

A Few Reminders:

- **Friday, February 2nd is National Wear Red Day** so let's all wear something red to school.
- **School is closed for Mid-Winter Recess** from Monday, February 19th through Friday, February 23rd. **School will reopen on Monday, February 26th.**
- Check your child's calendar for **Show-n-Tell** day.
- **Please send a backpack** big enough to hold your child's lunch, belongings, and crafts to make it easier to keep the children organized at dismissal time. Their backpack should be big enough to also hold their lunch. All children should have a coloring book in their cubby.
- **Please be prompt at drop-off and pick-up times.** If you need to pick your child up early let us know and we will have them ready.
- In the event of a snowstorm remember that school will be closed if there are 3 or more inches on the ground and it is still snowing. **Watch Cablevision News 12** for information and check your e-mail for notifications.
- Remember to **bring in replacement clothes** for your child's bin if we have sent them home because of an accident. Some bins are empty.
- **Please keep your child home if he/she is not feeling well** (fever, stomach virus, flu symptoms, etc.). We all must be extra diligent with this matter due to the time of year and the illnesses that come with it.
- Please do not forget utensils and water, milk or juice when packing your child's lunch.

As always, if you have any questions or suggestions, please feel free to call us any time.

Sincerely, Ms. Carol & Ms. Laurie, and Staff

at-a-glance

February Topics:

- Letters of the Alphabet
- Black History Month
- Ground Hog Day
- Lincoln & Washington's Birthday
- President's Day
- Valentine's Day
- Dental Health

Don't Forget:

- **To send a coloring book for your child's cubby**
- **Pack utensils, water/milk/juice in your child's lunch**



Valentines Celebration Wednesday, Feb. 14th

Mid-Winter Recess

Monday,
Feb. 19th–
Friday,
Feb. 23rd



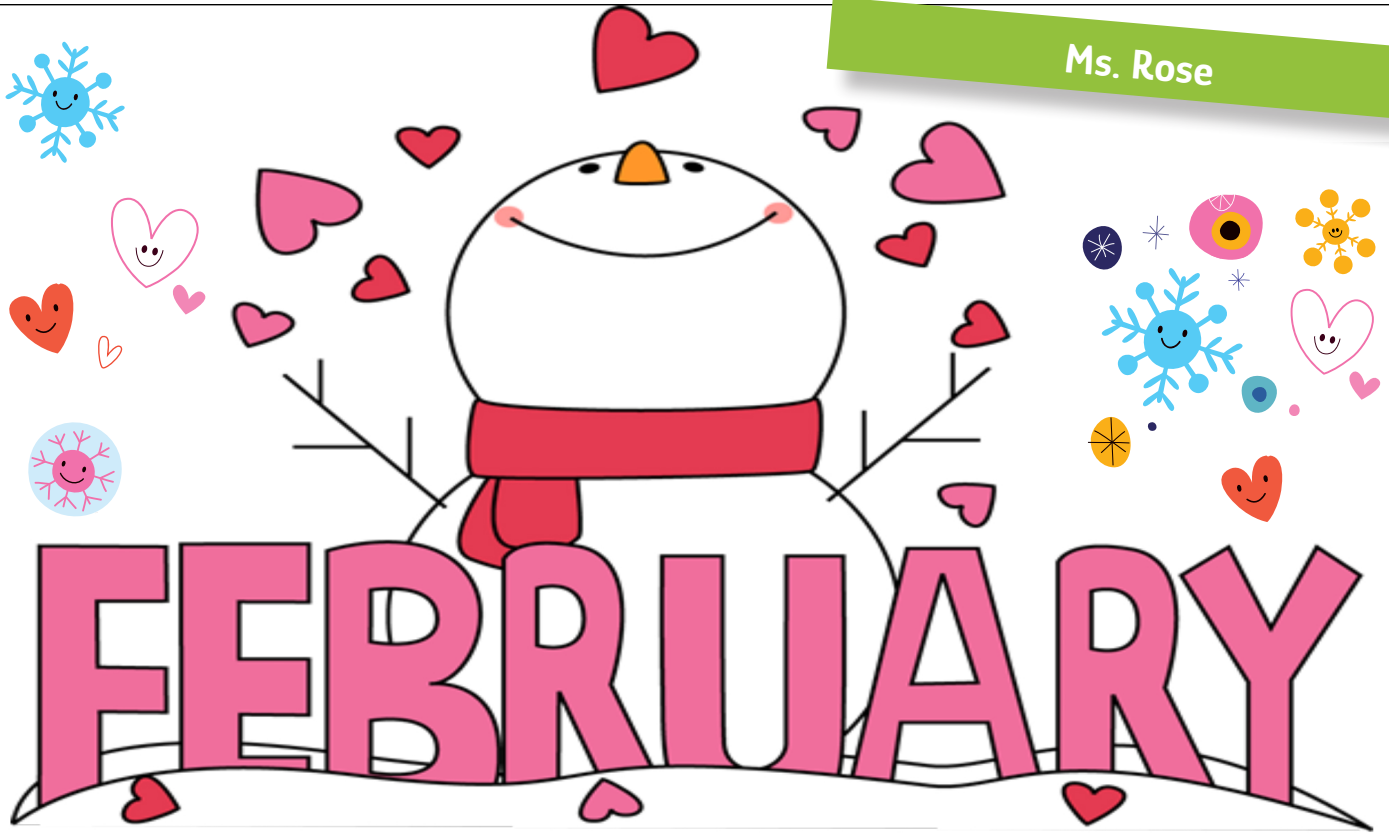
Bring a Backpack!

Backpacks big enough to hold your child's lunch & all their belongings make dismissal time easier and faster!









**Friday, February 2nd
is National Wear
Red Day.**





MS. ROSE

FEBRUARY

Sunday	Monday	Tuesday	Wednesday	Thursday	Friday	Saturday
				Gg 1 Gumball	Gg 2 Groundhog Day National Wear Red Day	3 
4 Valentine Fun	Ff 5 Feelings	Ff 6 Flowers Fire Drill 11:00	7 Valentine Treat Bags	Li 8 Love National Pizza Day	9 Lunar New Year National Pizza Day	10  Lunar New Year
11 Super Bowl  Sunday Make A Friend Day	12 Abraham Lincoln Lincoln's Birthday	Vv 13 Vase of Violets Mardi Gras	Vv 14 Valentine's Day Wear Red, Pink or Purple Today Ash Wednesday	Kk 15 Kangaroo Kisses Kindness Day	Kk 16 Koala Science Love Potion	
18 	19 Presidents Day School Closed	20 School Closed	21 School Closed	22 Washington's Birthday School Closed	23 School Closed	24 
25	26 Castle	27 Prince or Princess	Tt 28 Tooth Fairy Day	Tt 29 Healthy Teeth	1 Show -n- Tell	

Mid-Winter Break

Discovering Me

MONTHLY TIDBITS

hello

February

2024



Dear Parents,

February is a month of feelings and love. At school we will focus on teaching the children to love, respect, and care for one another.

This month we will continue our emphasis on the letters of the alphabet—sight and sound recognition for 3's and pre-k classes. All class lessons will incorporate **Black History Month Stories**, **Ground Hog Day**, **Lincoln's & Washington's Birthday**, **President's Day**, and valentine's crafts. February is also **National Children's Dental Health Month** so we will have discussions and stories about the importance of dental health.



We will be celebrating **Valentine's Day on Wednesday, February 14th** so try to have your child wear red, pink, or purple to school on this day. Most children bring in Valentine cards for their friends. If you send in cards from your child, just fill out your child's name but please do not address them to anyone specific as it is too difficult to separate all the cards by name.

We apologize for the delay in sending out report cards. We had multiple staff members sick at the same time, so we fell a little behind. Please remember to return your child's report card after reviewing it. We need them for June's progress report. At that time, you will be able to keep them.

If you plan on your child returning in September, please make sure to get your registration papers in at this time because space is very limited. Also do the same if your child is attending Summer Camp. Also note, if you have registered for summer 2024 and/or September 2024 and have not paid the registration fee, or spoken with us about payment please do so now because we will not be able to hold your child's spot any longer.

A Few Reminders:

- **Friday, February 2nd is National Wear Red Day** so let's all wear something red to school.
- **School is closed for Mid-Winter Recess** from Monday, February 19th through Friday, February 23rd. **School will reopen on Monday, February 26th.**
- Check your child's calendar for **Show-n-Tell** day.
- **Please send a backpack** big enough to hold your child's lunch, belongings, and crafts to make it easier to keep the children organized at dismissal time. Their backpack should be big enough to also hold their lunch. All children should have a coloring book in their cubby.
- **Please be prompt at drop-off and pick-up times.** If you need to pick your child up early let us know and we will have them ready.
- In the event of a snowstorm remember that school will be closed if there are 3 or more inches on the ground and it is still snowing. **Watch Cablevision News 12** for information and check your e-mail for notifications.
- Remember to **bring in replacement clothes** for your child's bin if we have sent them home because of an accident. Some bins are empty.
- **Please keep your child home if he/she is not feeling well** (fever, stomach virus, flu symptoms, etc.). We all must be extra diligent with this matter due to the time of year and the illnesses that come with it.
- Please do not forget utensils and water, milk or juice when packing your child's lunch.

As always, if you have any questions or suggestions, please feel free to call us any time.

Sincerely, Ms. Carol & Ms. Laurie, and Staff

at-a-glance

February Topics:

- Letters of the Alphabet
- Black History Month
- Ground Hog Day
- Lincoln & Washington's Birthday
- President's Day
- Valentine's Day
- Dental Health

Don't Forget:

- **To send a coloring book for your child's cubby**
- **Pack utensils, water/milk/juice in your child's lunch**



Valentines Celebration Wednesday, Feb. 14th

Mid-Winter Recess

Monday,
Feb. 19th—
Friday,
Feb. 23rd



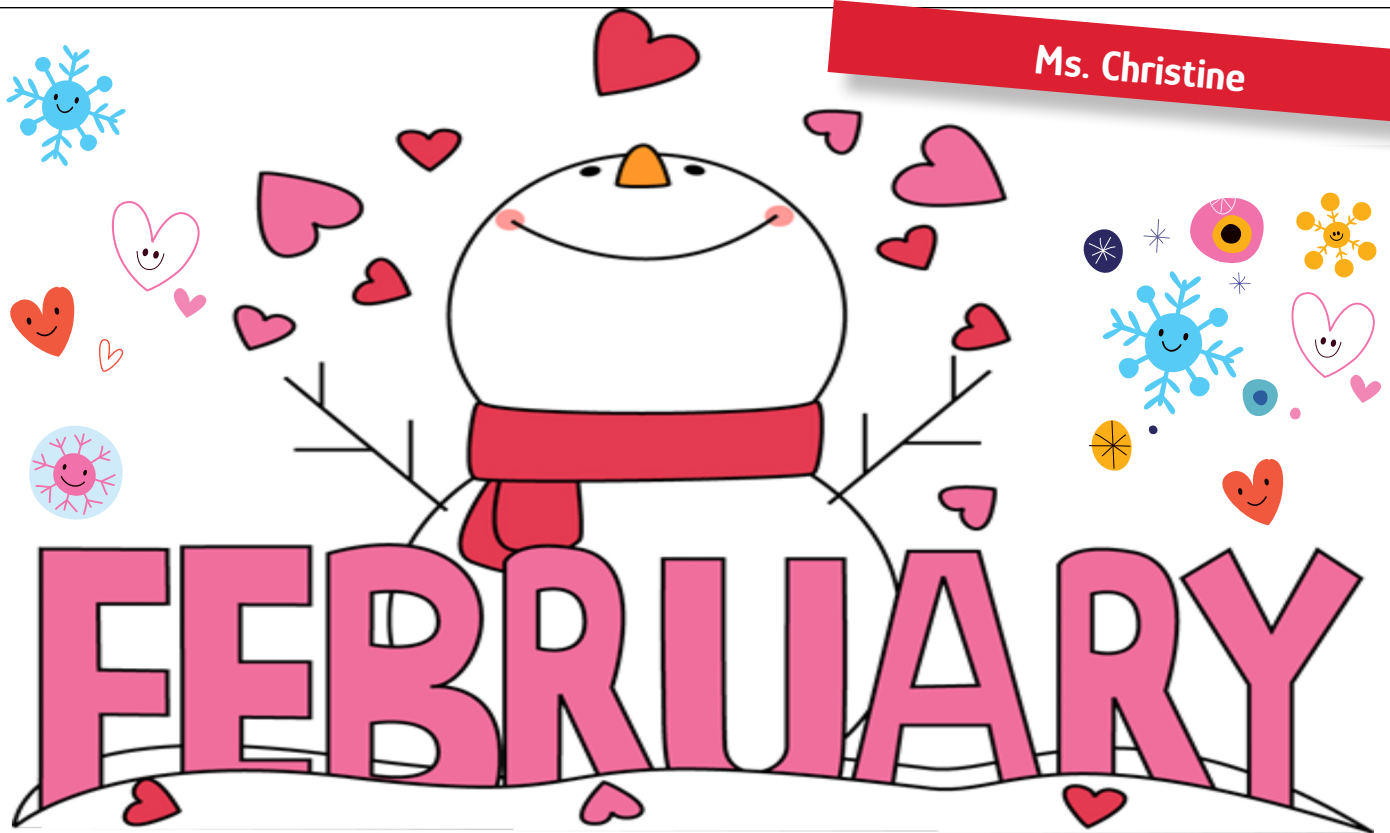
Bring a Backpack!

Backpacks big enough to hold your child's lunch & all their belongings make dismissal time easier and faster!



**Friday, February 2nd
is National Wear
Red Day.**





MS. CHRISTINE

FEBRUARY

Sunday	Monday	Tuesday	Wednesday	Thursday	Friday	Saturday
				Gg 1 Gumball	Gg 2 Groundhog Day National Wear Red Day Child of the Week DREA	3 
4 Valentine Fun	Ff 5 Feelings	Ff 6 Flowers Fire Drill 11:00	Vv 7 Valentine Treat Bags	Ll 8 Love National Pizza Day	Ll 9 Lunar New Year National Pizza Day Child of the Week CHLOE	10  Lunar New Year
11 Super Bowl  Sunday Make A Friend Day	12 Abraham Lincoln Lincoln's Birthday	Vv 13 Vase of Violets Mardi Gras	Vv 14 Valentine's Day Wear Red, Pink or Purple Today Ash Wednesday	Kk 15 Kangaroo Kisses Kindness Day	Kk 16 Koala Science Love Potion Child of the Week DAX	
18 	19 Mid-Winter Break Presidents Day	20 School Closed	21 School Closed	22 Washington's Birthday School Closed	23 School Closed	24 
25	26 Castle Tell a Fairy Tale Day	27 Prince or Princess Strawberry Day	Tt 28 Tooth Fairy Day	Tt 29 Healthy Teeth	1 Show-n-Tell Child of the Week ELLIOT	

Discovering Me

MONTHLY TIDBITS

hello

February

2024



Dear Parents,

February is a month of feelings and love. At school we will focus on teaching the children to love, respect, and care for one another.

This month we will continue our emphasis on the letters of the alphabet—sight and sound recognition for 3's and pre-k classes. All class lessons will incorporate **Black History Month Stories**, **Ground Hog Day**, **Lincoln's & Washington's Birthday**, **President's Day**, and valentine's crafts. February is also **National Children's Dental Health Month** so we will have discussions and stories about the importance of dental health.



We will be celebrating **Valentine's Day on Wednesday, February 14th** so try to have your child wear red, pink, or purple to school on this day. Most children bring in Valentine cards for their friends. If you send in cards from your child, just fill out your child's name but please do not address them to anyone specific as it is too difficult to separate all the cards by name.

We apologize for the delay in sending out report cards. We had multiple staff members sick at the same time, so we fell a little behind. Please remember to return your child's report card after reviewing it. We need them for June's progress report. At that time, you will be able to keep them.

If you plan on your child returning in September, please make sure to get your registration papers in at this time because space is very limited. Also do the same if your child is attending Summer Camp. Also note, if you have registered for summer 2024 and/or September 2024 and have not paid the registration fee, or spoken with us about payment please do so now because we will not be able to hold your child's spot any longer.

A Few Reminders:

- **Friday, February 2nd is National Wear Red Day** so let's all wear something red to school.
- **School is closed for Mid-Winter Recess** from Monday, February 19th through Friday, February 23rd. **School will reopen on Monday, February 26th.**
- Check your child's calendar for **Show-n-Tell** day.
- **Please send a backpack** big enough to hold your child's lunch, belongings, and crafts to make it easier to keep the children organized at dismissal time. Their backpack should be big enough to also hold their lunch. All children should have a coloring book in their cubby.
- **Please be prompt at drop-off and pick-up times.** If you need to pick your child up early let us know and we will have them ready.
- In the event of a snowstorm remember that school will be closed if there are 3 or more inches on the ground and it is still snowing. **Watch Cablevision News 12** for information and check your e-mail for notifications.
- Remember to **bring in replacement clothes** for your child's bin if we have sent them home because of an accident. Some bins are empty.
- **Please keep your child home if he/she is not feeling well** (fever, stomach virus, flu symptoms, etc.). We all must be extra diligent with this matter due to the time of year and the illnesses that come with it.
- Please do not forget utensils and water, milk or juice when packing your child's lunch.

As always, if you have any questions or suggestions, please feel free to call us any time.

Sincerely, Ms. Carol & Ms. Laurie, and Staff

at-a-glance

February Topics:

- Letters of the Alphabet
- Black History Month
- Ground Hog Day
- Lincoln & Washington's Birthday
- President's Day
- Valentine's Day
- Dental Health

Don't Forget:

- **To send a coloring book for your child's cubby**
- **Pack utensils, water/milk/juice in your child's lunch**



Valentines Celebration Wednesday, Feb. 14th

Mid-Winter Recess

Monday,
Feb. 19th–
Friday,
Feb. 23rd



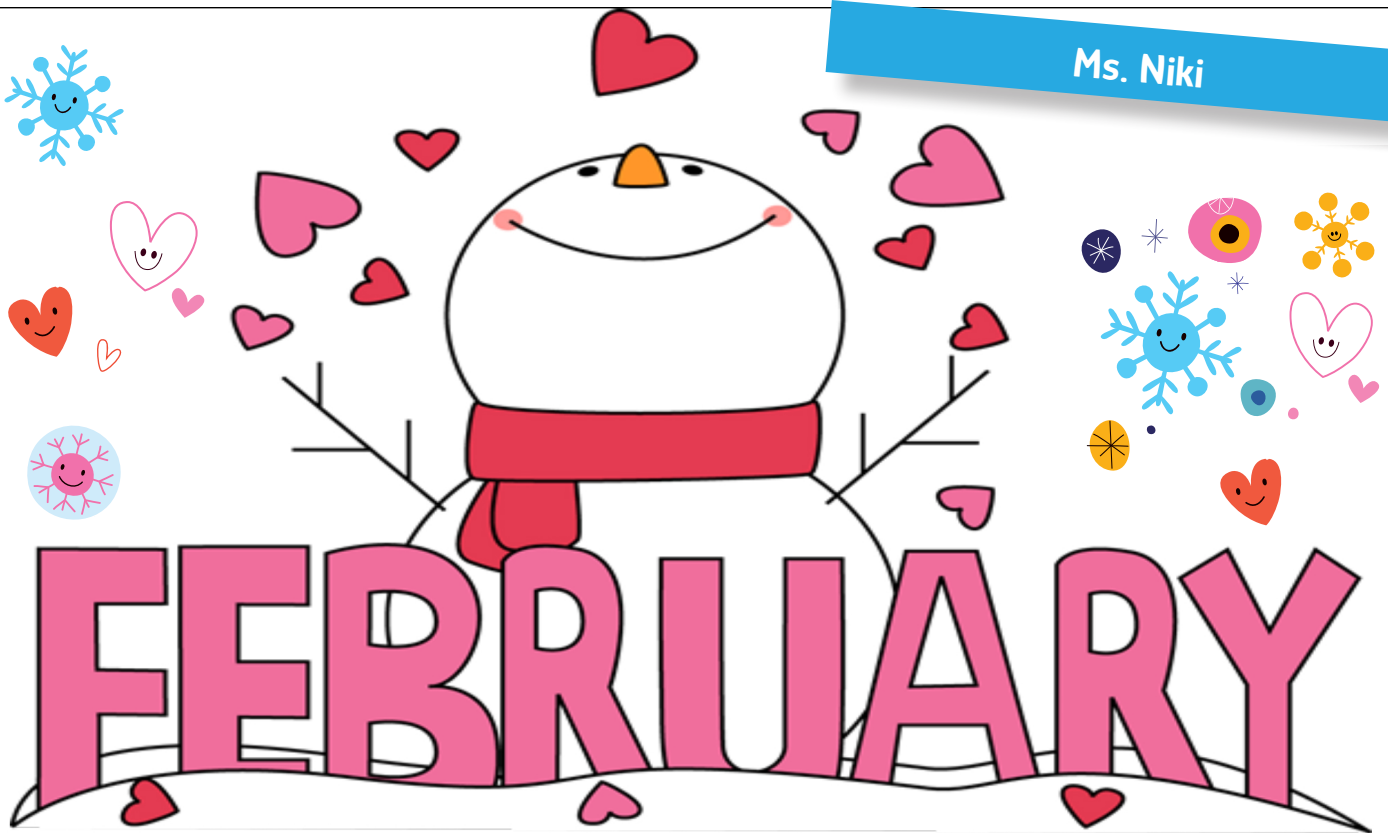
Bring a Backpack!

Backpacks big enough to hold your child's lunch & all their belongings make dismissal time easier and faster!








**Friday, February 2nd
is National Wear
Red Day.**





MS. NIKI

FEBRUARY

Sunday	Monday	Tuesday	Wednesday	Thursday	Friday	Saturday
				<p>1</p> <p>Welcome to February</p> <p>Hot Air Balloon</p>	<p>2</p> <p>Groundhog Day</p> <p>National Wear Red Day</p>	<p>3</p> 
<p>4</p> <p>Valentine Fun</p>	<p>5</p> <p>Heart</p>	<p>6</p> <p>Hugs</p> <p>Fire Drill 11:00</p>	<p>7</p> <p>Kisses</p>	<p>8</p> <p>Love</p>	<p>9</p> <p>Flowers</p> <p>Science: Colors</p> <p>National Pizza Day</p>	<p>10</p>  <p>Lunar New Year</p>
<p>11</p> <p>Super Bowl</p>  <p>Sunday</p> <p>Make A Friend Day</p>	<p>12</p> <p>Valentine Day Box</p> <p>Lincoln's Birthday</p>	<p>13</p> <p>I ♥ U to Pieces</p> <p>Mardi Gras</p>	<p>14</p> <p>Valentine's Day</p> <p>Wear Red, Pink or Purple Today</p> <p>Ash Wednesday</p>	<p>15</p> <p>KK</p> <p>Heart Stamping</p> <p>Kindness Day</p>	<p>16</p> <p>Dancing Heart</p> <p>Science Experiment</p> 	
<p>18</p> 	<p>19</p> <p>20</p> <p>21</p> <p>22</p> <p>23</p> <p>24</p> <p>Mid-Winter Break</p> <p>School Closed</p>					<p>24</p> 
<p>25</p> <p>Feelings</p>	<p>26</p> <p>How Do You Feel Today?</p>	<p>27</p> <p>A Bunch of Feelings</p>	<p>28</p> <p>Emojis</p>	<p>29</p> <p>Kindness Feeling Tree</p>		