

# Discovering Me MONTHLY TIDBITS

## JANUARY 2021 HAPPY NEW YEAR!

Well, we made it through the holidays! We hope every family had a wonderful time and we wish the best for you in the New Year. The staff and I would like to thank you for the many gifts and cards we received. Each and every one was special.

January is a busy month at school. This month's topics include a review of shapes, colors & numbers, the start of our study of the letters of the alphabet (keep an eye out for special letter days!), Martin Luther King, Jr., arctic animals and winter activities. We will do a week of testing for our Pre-School and Pre-K children and a full review of everything covered to date. We will also incorporate reading readiness and handwriting skills for the kindergarten bound children.

**Report cards will be distributed Thursday, January 28th & Friday, January 29th for our nursery school and Pre-K children.** If you would like a conference pertaining to your child's progress please make an appointment with your child's teacher. If we feel a conference is necessary we will indicate so on the report card.

With the cold weather here, we ask for extra vigilance in keeping children home when showing flu like symptoms. Due to Covid-19 we must follow strict protocols, which include a doctor's note stating that your child is able to return to school and has been fever free for 48 hours. We know that this is a hardship and ask for your cooperation for the sake of all the students and staff.

Thank you to all the families that participated in our Holiday fundraiser. Your effort is greatly appreciated and will help to continuously upgrade our classrooms. Congratulations to the Spollen Family on winning the Holiday 50/50 raffle.

In the event of snow the school will be closed if there is 3 inches or more on the ground. You can check Local News 12 on Cablevision and your e-mail for closings or delayed opening updates.

### A Few Reminders:

- Tuesday, January 5th is **Show & Tell** which is your child's favorite holiday gift.
- Friday, January 29th is one of the most popular days of the year — **Pajama Day**.
- We will be conducting the first **Shelter In Place Drill** on Friday, January 17th from 10:30–11:00am. No one is permitted to enter or leave the building for the duration of the drill. A reminder e-mail will be sent on Thursday, January 16th. The drill concerns members of the staff and will not affect the children's day.
- All medical and physical forms must be kept complete and up-to-date in order for your child to attend school. Reminders are sent home when your child's medical form is due to expire.
- Do not block the driveway or the turnaround in front of 2053 Palmer Avenue at drop-off and pick-up time as both must be kept clear at all times in order for traffic to move freely in and out of the driveway.
- **Pizza money** for the Friday full day children that participate is now due for January, February and March. \$60 fee in cash is requested in order to pay the delivery person with cash.
- If you are planning on your child attending our summer camp and/or returning in the fall and have not registered as of yet, please do so. Space is limited and registering early is the only way to ensure the days and hours you want.
- Please encourage your child to leave all toys at home because the cubbies are overflowing.

As always, if you have any questions or suggestions, please feel free to call us any time.

Sincerely, Ms. Carol & Ms. Laurie,  
and Staff



## at-a-glance

### January Topics:

- Shapes, colors, numbers
- Martin Luther King Jr.
- Artic Animals
- Winter Activities
- Reading Readiness
- Handwriting Skills



**Report Cards will be distributed Thursday, Jan. 28th & Friday, Jan 29th**



**What favorite holiday gift is your child bringing for Show-n-Tell on Tuesday, January 5th?**

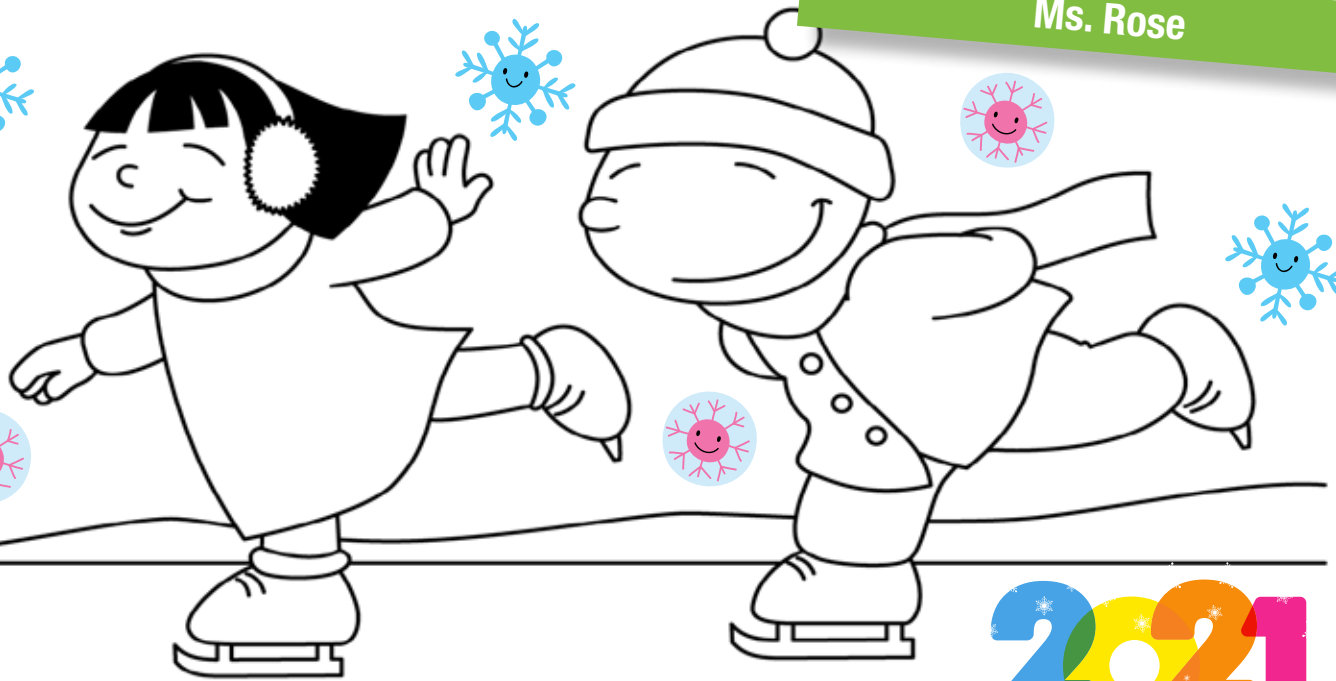


**School is closed Martin Luther King Jr. Day; January 18th**



**We Hate Losing Things! Please label all of your child's clothing including hats, mittens, & scarves!**



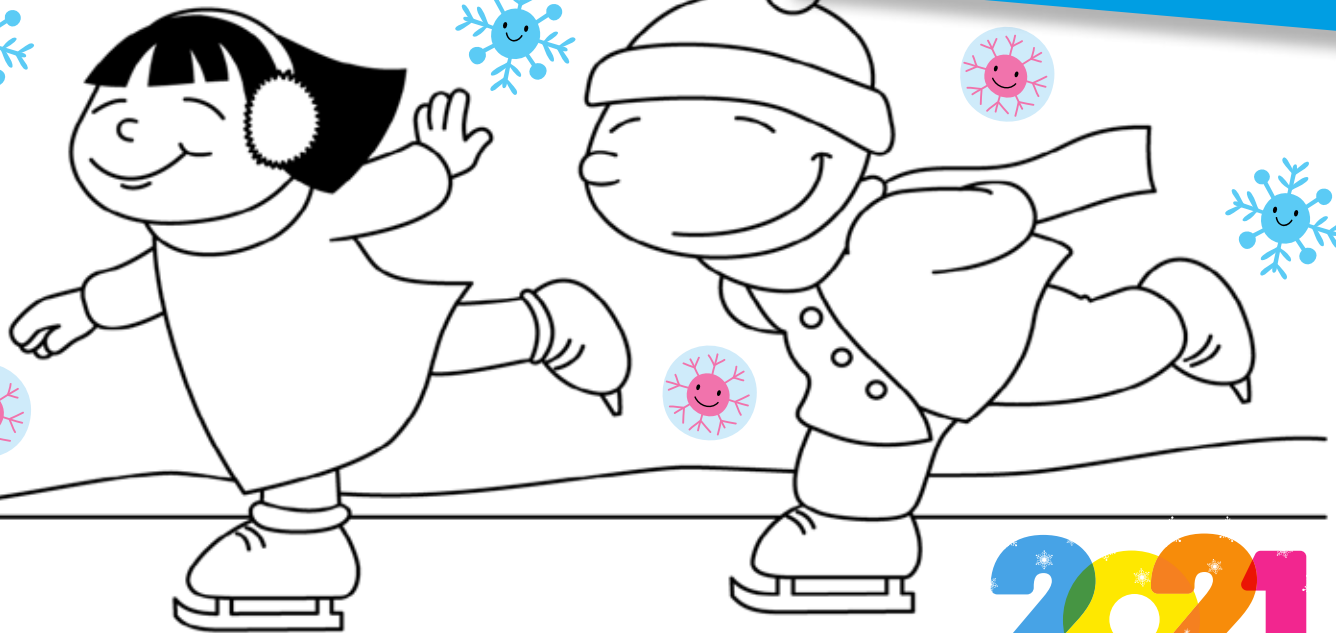


Ms. Rose



## JANUARY


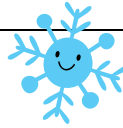

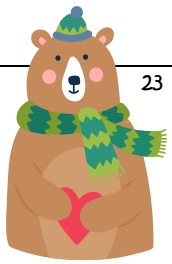


Sunday	Monday	Tuesday	Wednesday	Thursday	Friday	Saturday
					1 Happy New Year! School is Closed	2
3 Begin Letters	4 Welcome 2021 Ring in the New Year	5 Show-n-Tell Favorite Holiday Gift	6 Three Kings Day Fire Drill 12:45	7 Ss Snowflakes	8 Ss Snowman Science Friday	
10 Start of Spatial Concepts	11 Pp Popcorn Day In / Out	12 Pp Polar Bear In / Out	13 Boots Left / Right	14 Mm Mittens	15 Mm Martin Luther King, Jr Project Shelter In Place Drill	16 
17 Arctic Animals	18 Martin Luther King, Jr Day School is Closed	19 Aa Arctic Fox	20 Aa Penguin Day	21 Walrus	22 Blubber Science Friday Blonde Brownie Day	23
24 	25 Opposite Day	26 Review & Testing	27 Review & Testing	28 Lego Day Report Cards	29 Pajama Day! Report Cards	30 
31						

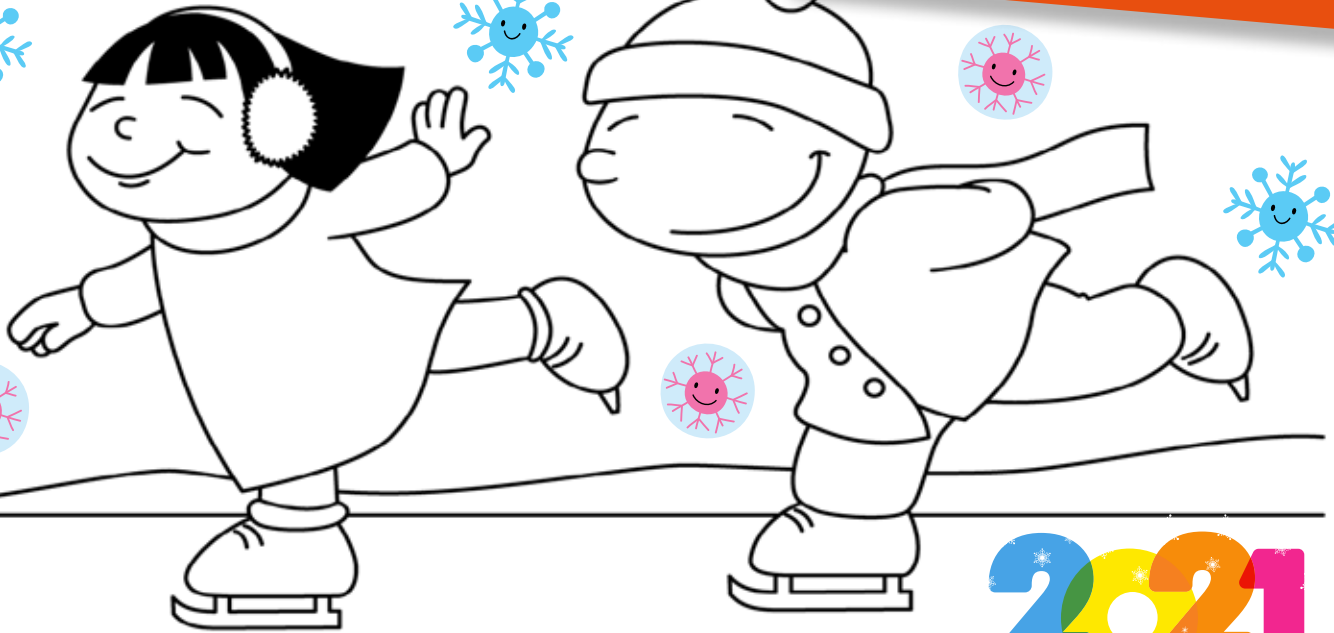


Ms. Niki

**2021**  
HAPPY NEW YEAR!



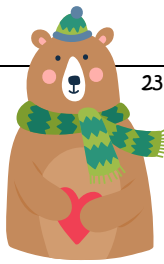


## JANUARY

Sunday	Monday	Tuesday	Wednesday	Thursday	Friday	Saturday
					1 Happy New Year! School is Closed	2
3 Begin Letters	4 Welcome 2021 Ring in the New Year	5 Show-n-Tell Favorite Holiday Gift	6 Three Kings Day Fire Drill 12:45	7 Ss  Snowflakes	8 Ss Snowman Science Friday	
10 Pp	11 Popcorn Day In / Out	12 Pp Polar Bear In / Out	13 Boots Left / Right	14 Mm Mittens Left / Right	15 Mm Martin Luther King, Jr Project Shelter In Place Drill	16 
17 Arctic Animals 	18 Martin Luther King, Jr Day School is Closed	19 Aa Arctic Fox	20 Aa Penguin Day	21 Walrus	22 Blubber Science Friday Blonde Brownie Day	23
24 Opposite Day	25	26 Fun with Beads	27 Fun with Play-Doh	28 Lego Day	29 Pajama Day!	30 
31						



Ms. Christine

## JANUARY

Sunday	Monday	Tuesday	Wednesday	Thursday	Friday	Saturday
					1 Happy New Year! School is Closed	2
3 Begin Letters	4 Welcome 2021 Ring in the New Year	5 Show-n-Tell Favorite Holiday Gift	6 Three Kings Day Fire Drill 12:45	7 Ss Snowflakes	8 Ss Snowman Science Friday	
10 Start of Spatial Concepts	11 Pp Popcorn Day In / Out	12 Pp Polar Bear In / Out	13 Boots Left / Right	14 Mm Mittens	15 Mm Martin Luther King, Jr Project Shelter In Place Drill	16 
17 Arctic Animals	18 Martin Luther King, Jr Day School is Closed	19 Aa Arctic Fox	20 Aa Penguin Day	21 Walrus	22 Blubber Science Friday Blonde Brownie Day Child of the Week CHARLIE	23
24 	25 Opposite Day	26 Review & Testing National Kazoo Day	27 Review & Testing National Puzzle Day	28 Lego Day Report Cards	29 Pajama Day! Report Cards Child of the Week SANAM	30 
31						